



OEM 4k DLP Large Venue Projectors 10000lm For Intergrated Projection

Our Product Introduction

Basic Information

- Brand Name: Yeoan
- Model Number: YAM906U
- Minimum Order Quantity: 1
- Price: negotiate
- Packaging Details: Packaging Box Dimensions (WxDxH mm): 732*352*630
- Delivery Time: 15 days
- Payment Terms: L/C, T/T, Western Union



Product Specification

- Display Technology: 3LCD
- Standard Resolution: WUXGA (1920 X 1200)
- Brightness: 10000lm
- Projection Light Source: Laser
- Lens Optional: Manual And Motorized
- Standard Lens Ratio: 1.30-3.02 1
- Contrast Ratio: 100000:1
- Uniformity: 80%
- Standard Lens Shift: V: 50% 10%、 H:±20%
- Keystone Correction: V: ±30° H ±30°
- Aspect Ratio: Native:16:10 Compatible: 4:3/16:9
- Focus Mode: Manual Or Auto Optional
- Highlight: **OEM Large Venue Projectors,
4k DLP Large Venue Projectors,
Intergrated 4k dlp projector**

for more products please visit us on projector-hd.com

Product Description

Enjoy bright, high-contrast images in lecture halls, large conference rooms, museums and entertainment venues with this 10,000 lumen WUXGA laser 3LCD projector. 10,000 lumens of brightness and virtually unlimited dynamic contrast work together to overcome light issues in bright rooms and provide detail in dark areas of the image. It features the Sony 3LCD display system with 1920 x 1200 WUXGA native resolution for viewing high-definition video and detailed pictures or data on screens up to 500". The projector uses a separately available lens, offering a range of throw distances and zoom values to suit a variety of installation settings.

Laser light source;

- 3LCD technology
- 20,000 hours light source lifetime

High quality

- Maximum brightness upon to 10000 lumen
- 10,0000 :1 high contrast
- WUXGA (1920*1200 pixels)
- Supports 4K HD input

Easy to install

- 360° all-round projection (with protective cover)
- Multiple optional lens for choice both electric and manual
- Compact design with net weight about 24kg

Rich in interface

- Dual HDMI input
- HDBaseT port
- Automatic color calibration function
- SDI port for optional
- DVI input
- HDMI OUT
- Wired remote control input&output

Closed optical machine

Application:

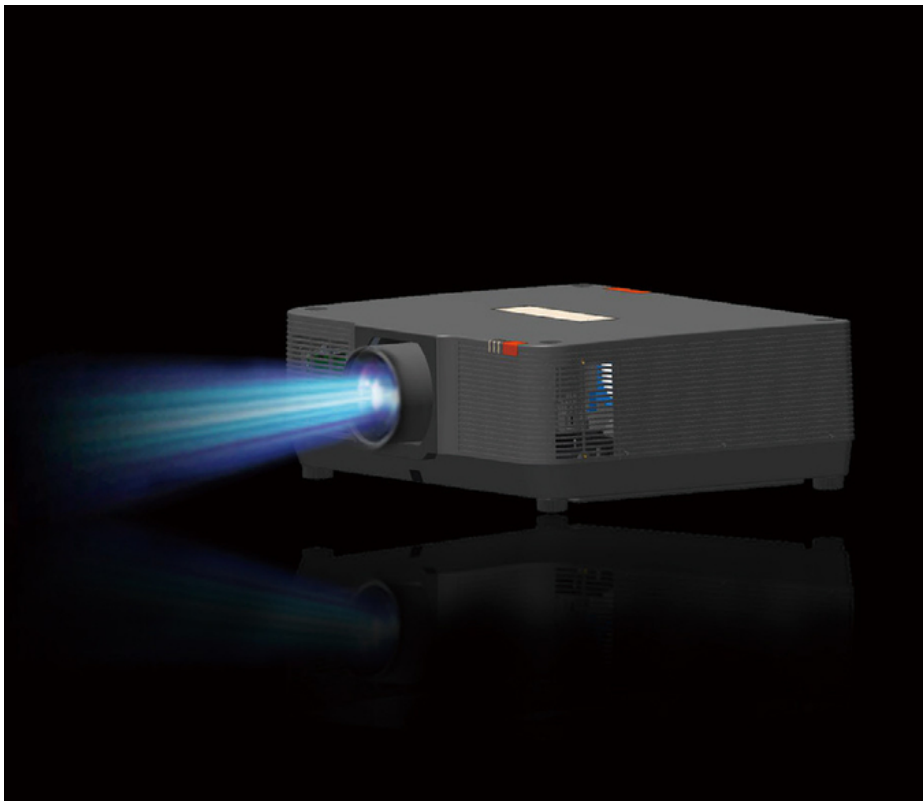
Widely used outdoor projection, extra-large meeting rooms/househall/Academic Lecture Hall/hospital hall/big church/factory workshop and so on.

Key parts		
	Lens	optional
	Light source	Laser
Brightness		
	Brightness (Bright Mode) (Ansi Lumens)	10000lm
Overall Spec		
Panel	Display Panel	3x0.76"
	Display Technology	Liquid Crystal Display
	Native Resolution	WUXGA (1920 x 1200)
Light source Life time	Normal mode	20000hrs
	ECO mode	20000hrs
Projection Lens	Zoom/Focus	Powered
	Throw Ratio(16:10)	1.30-3.02
	F	F1.7~2.0
	f	21.8-49.8
	Zoom Ratio	±2.3
	Screen size (Performance guarantee range)	50-500 inch (80-200 inch)
	Lens Shift V	+50%,-10%
	Lens Shift H	±20%
CR	Contrast Ratio(Min)	100000:1
Noise	Noise(dB)	Normal(90%): 35dB ECO1(75%): 32dB ECO2(45%): 32dB
Uniformity	Uniformity(Actual Min) -JISX6911	80%
AR	Aspect Ratio	Native:16:10 Compatible: 4:3/16:9/normal
Terminal(I/O port)		
Input	VGA	*1
	HDMI 1.4(IN)	*2
	USB-A	*1 (5V/1.5A)
	USB-B	*1(Display)
	RJ45	*1(Display)
	DVI-D	*1

	HD BaseT	*1
	HD-SDI(3G-SDI)	Optional
	Video	N/A
	Audio in (mini jack,3.5mm)	*1 (VGA/DVI-D share)
Output	VGA/VGA IN	*1
	HDMI 1.4(OUT&IN)	*1
	Audio out(mini-jack,3.5mm)	*1
Control	RS232	*1
	RJ45	*1 (Control)
	USB-B	*1 (For upgrade)
	Wired Remote(IN)	*1
	Wired Remote(OUT&IN)	*1
General Spec		
Audio	Speaker	N/A
Cooling	Dust filter free	Closed inner circulation design
Power Consumption	Power Requeirements	100~240V@ 50/60Hz
	Power Consumption (Boost) (Max)	850
	Power Consumption (Normal) (Max)	750
	Power Consumption (ECO1) (Max)	650
	Power Consumption (ECO2) (Max)	450
	ECO Standby Mode Power Consumption	<0.5W
Temp.&Humidity	Operating Temp.	5 to 40deg.C
	Operating humidity.	20-80%
	Store Temp.	-10 to 50deg.C
	Store Humidity.	20-80%
Other Functions		
Keystone	Keystone Correction	V: ±30° H:±30° Pincushion/Barrel Correction 6 Corner Geometry correction 4 Corner Correction Grid ImageTune correction
OSD	Languages	26 languages: English, German, French, Italian, Spanish, Polish, Swedish, Dutch ,Portugese, Japanese, Simplified Chinese, Traditional Chinese, Korean, Russian, Arabic, Turkish, Finnish, Norwegian, Danish, Indonesian, Hungarian, Czech, Kazak,Vietnamese,Thai, Farsi
LAN Control	LAN Control-RoomView (Crestron)	Yes
	LAN Control-AMX Discovery	N/A
	LAN Control-PJ Link	Yes
Scanning Frequency	H-Synch Range	15~100KHz
	V-Synch Range	24~85Hz
Display Resolution	Computer Signal Input	VGA, SVGA, XGA, SXGA,WXGA,UXGA,WUXGA,4K@30Hz
	Video Signal Input	480i, 480p, 576i, 576p, 720p, 1080i and 1080p
SW setting	Auto Setup	INPUT SEARCH,AUTO PC,
	Blank	Yes
	Suspend	Yes(5miniutes no singnal as default)
	Picture mode	Dynamic,Standard,Cinema,Colorboard, DICOM,blackboard(green)
	Cooling time	0s,30s,Normal
	Closed caption	N/A
	High altitude	Yes(1400~3650m)
	Auto Ceiling	Yes
	D-Zoom	1~33
	360° projection	360° all-round projection

Others	Edge Blending	N/A
Dimension&Weight		
	MAX Dimensions (WxHxD mm)	600*218*503.3
	Net. Weight (KG)	~24kg
	Single Packaging Box Dimensions (WxHxD mm)	732*352*630
	Single Gross. Weight (KG)	~29kg
	Double Packaging Box Dimensions (WxHxD mm)	805*452*716
	Double Gross. Weight (KG)	~33kg
Accessory		
	Manual Languages	Chinese,English
	Standard Accessories	Power cord(3m,Black), Remote control&RC Battery
Regulation List		
China	CCC	√
	CECP	X
	CEL-(2016/10-)	X
WW	CB	√
US	cTUVus	√
	FCC	√
	FDA	√
EU	CE-EMC	√
	CE-LVD	√
	CE-ERP	√
EMC Class		
	EMC Class	Class A@3dBm





Hefei Yeoan Information And Technology Co.,Ltd.



+8613866663080



zero@yeoan.com



projector-hd.com

No. 79 Kexue Avenue, Keyuan Pioneer Center, High-tech Zone, Hefei City, Anhui Province.