



HDMI Small Wall Mounted Advertising Display Touch Screen Monitor 15.6 Inch

Our Product Introduction

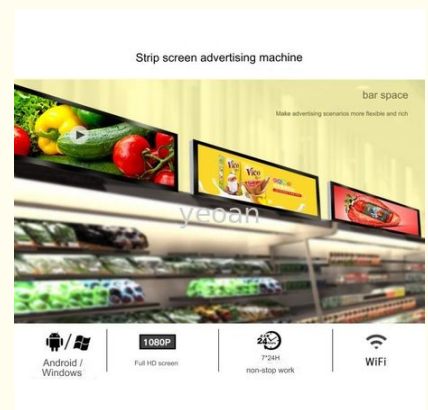
Basic Information

- Brand Name: YEOAN
- Model Number: TA-156
- Minimum Order Quantity: 100
- Packaging Details: Packing carton: 450*310*110 mm
- Delivery Time: 30days
- Payment Terms: L/C, T/T



Product Specification

- Mounting Type: Wall Mounted
- Display Type: LCD
- Screen Size: 15.6 Inch
- Power Supply: AC 100-240V, 50/60Hz
- Viewing Angle: 178°
- Response Time: 30 Ms
- Contrast Ratio: 3000:1
- Resolution: 1920x1080
- Brightness: 250 Cd/m²
- Touch Screen: Yes
- Connectivity: HDMI, VGA, USB
- Operating System: Android Or Windows
- Language Menu: English, Chinese And Other Languages
- Metal Shape: Can Be Customized
- Frame Colour: Can Be Customized



Product Description

Playback method

Insert the U disk/SD card with pictures, videos and other materials into the advertising machine, and automatically play in a loop

Function display

Equipped with 8G SD card storage, the vertical screen source cannot be automatically converted, and needs to be converted to split screen playback through computer software. Vertical screen and split screen playback need to be made. It is recommended to use the smart stand-alone version.

Image format:

JPG/PNG/BMP (color mode is RGB Video format: AVI)

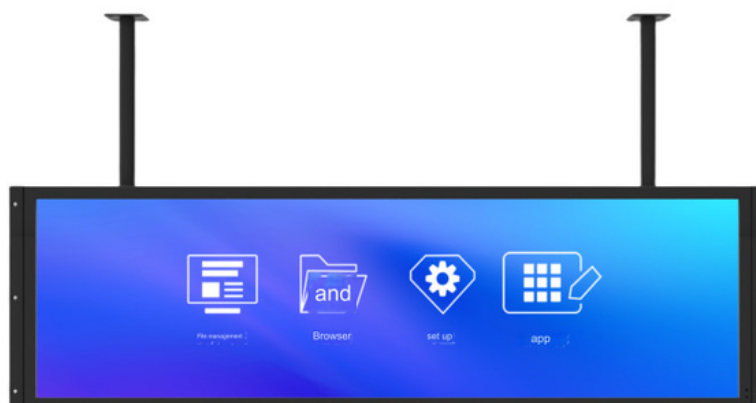
MP4, MPG, MOV, etc. [Speed 25-30FPS or less, video code stream supports a maximum of 20M/S] Music format: MP3, WM4

The product uses original A-level panels from BOE/AUO/LG, and can be used with Android Windows, or domestically produced information and innovation platforms such as Lin and Tongxin infrared, nano, capacitance, and Shida, etc, to meet customers' actual application needs in multiple scenarios. The integrated cold rolling process of metal stamping, the matching of the profile frame, and the high-transmittance tempered glass have a grand and stable appearance and are widely used in business, administration, education, entertainment and other fields.

size	15.6"	18.5"
Display parameters		
Panel size	15.6"	18.5"
Resolution	1920*1080(pixels)	1920*1080(pixels)
Pixel pitch	0.18*0.18 mm	0.21*0.21 mm
brightness	250cd/m ² (typ.)	250cd/m ² (typ.)
Contrast	3000:1 (typ.)	1200:1 (typ.)
Color	16.7M (8bit)	16.7M (8bit)
Response time	30ms (typ.)	14ms (typ.)
Viewing area (H*V)	344.16*193.59 mm	409.8*230.4 mm
Angle (H*V)	178° / 178°	178° / 178°
Service life	30,000 hrs (typ.)	30,000 hrs (typ.)
Mainboard parameters (optional)	352 motherboard (2K solution)	RK3566 motherboard (2K solution)
Running the system	Android 9.0	Android 11
chip	Hi3751Quad Core cortex A53Frequency1.0GHz	RK3566Quad Core cortex A55Frequency1.8GHz
Memory	1G	2G
storage	8G	16G
network	100MEthernet/WiFi-2.4G	100MEthernet/WiFi-2.4G
Video Format	MPEG2-4,H.264,wait	MPEG2-4,H.264,H.265,wait
Image Format	JPG, JPEG, BMP, PNG,wait	JPG, JPEG, BMP, PNG,wait
Menu language	Chinese/English, etc.	Chinese/English, etc.
External connection port		
USB2.0	*1	*1(support1roadUSB 3.0)
USB2.0(OTG)	*1	*1
HDMIinterface	*1(supportHDMIenter)	*1(supportHDMIOutput)
RJ45	*1	*1
WIFI	*1	*1
2.4Gantenna		
power supply		
Speaker power	5W*2	5W*2
Standby power	≤0.5W	≤0.5W
Power supply for the whole machine	AC110V-220V,50-60 Hz	AC110V-220V,50-60 Hz
Machine power	≤30W	≤40W
Work Environment		
Operating temperature	0 ~40	0 ~40

Operating humidity	20%~85%(No condensation)	20%~85%(No condensation)
Storage temperature	-10 60	-10 60
Storage humidity	10%~ 60%(No condensation)	10%~ 60%(No condensation)
Material		
Housing Material	Aluminum frame + tempered glass + metal back cover	Aluminum frame + tempered glass + metal back cover
Shell color	Silver + black frame + black back cover	Silver + black frame + black back cover
size		
Bare metal size (W*H*D)	376.4*236.4*52.2 mm	443.4*267.4*56.2 mm
External dimensions of packaging(W*H*D)	450*310*110mm	520*345*110 mm
VESAhole	100*100mm, 4*M4screw	100*100mm, 4*M4screw
weight		
net weight	3.5KG	4KG
Gross Weight	4KG	4.5KG
appendix		
Remote Control	*1	*1
Power cord	*1	*1
Warranty card	*1	*1
Certificate	*1	*1
Wall Mount	*1	*1

Welcome to customize the different size of the display screen.



More new upgrades

and powerful attacks



Smart split screen*

Multiple modes



Built-in WIFI

wireless networking



remote control

Off-site release



Loop play

Program carousel



Hanging horizontally and vertically

Flexible switching



Super performance

Configuration upgrade



multi-touch

Responsive



Timer switch

Save time and effort



4K

Ultra HD display

Android system: supports Android application software
download Windows system: compatible with various Windows system software, and can also be
connected to the host as a display via HDMI cable



Android



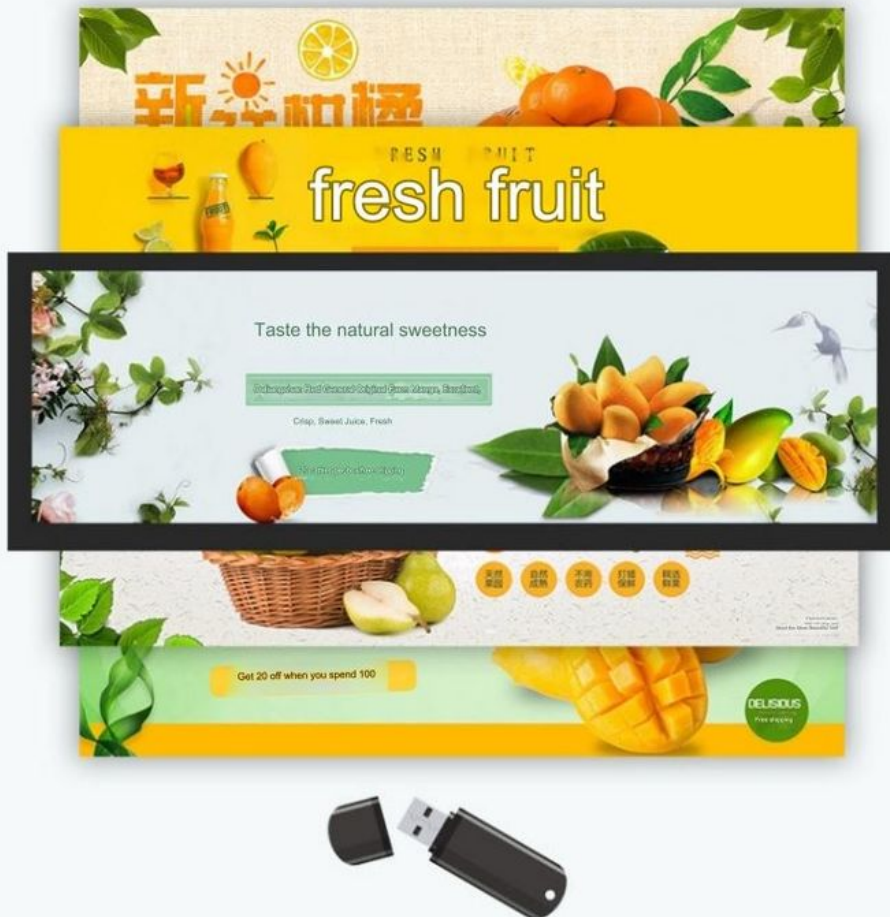
Windows



Import and play programs from USB flash disk

U disk import and play programs

Easy import of USB flash drive, plug and play loop playback

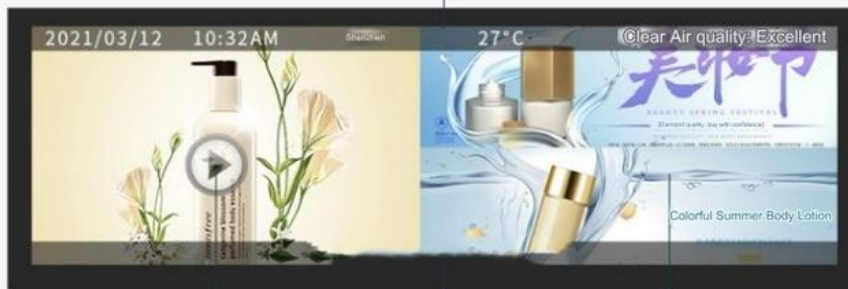


Convenient multi region division

Convenient multi-region division

The display area can be freely divided, pictures and videos can be combined at will, and the built-in templates can also be customized to create advertisements

Set date, time, location, temperature, weather, air quality



Play video ads

Set the font color and size of the scrolling subtitles

Play image ads

Timing settings in different periods

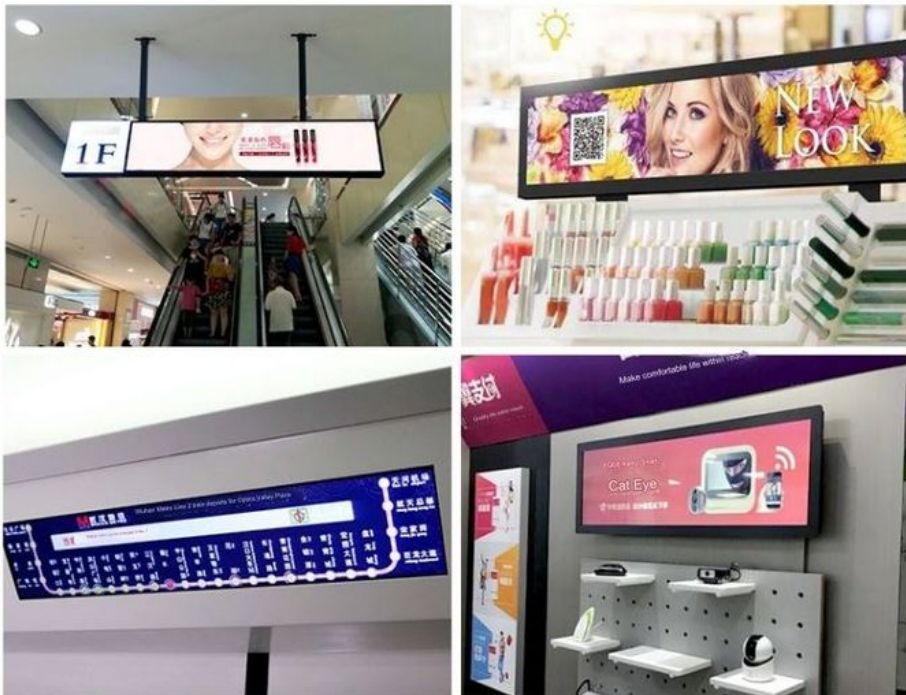
Timing settings for different time periods

The system supports multiple time period program presets, different programs automatically switch seamlessly according to time periods without black screen, and timed power on and off



Application scenarios

Shopping center/mall/bank/hotel/subway/enterprise



Hefei Yeaoan Information And Technology Co.,Ltd.



+8613866663080



zero@yeoan.com



projector-hd.com

No. 79 Kexue Avenue, Keyuan Pioneer Center, High-tech Zone, Hefei City, Anhui Province.